



## STAWELL CORRIDOR PROJECT

65KM OF PROSPECTIVE STRIKE WITH THREE DISCOVERIES AND VARIOUS EXPLORATION TARGETS

- **Irvine Gold Project:** Inferred Resource of 304 koz gold at 2.43 g/t open at depth
- **Morning Bill Gold, Silver & Copper Project:** Zoned hydrothermal system beneath cover
- **Langi Logan Gold Project:** Stawell style orogenic gold mineralisation beneath cover
- **Various Greenfields targets:** Multiple identified targets prospective for Stawell style mineralisation

Aureka's flagship Stawell Corridor Project is located in Western Victoria, covering 65km of prospective strike south of the Stawell Gold Mine. The company's tenure is in good standing with 11 granted tenements for a total of 598.4km<sup>2</sup> and a total of more than \$17.1M spent since the acquisition.

The Stawell Corridor Project host three significant exploration targets: Irvine Gold Project (including Resolution and Adventure), Morning Bill Gold, Silver & Copper Project, and Langi Logan Gold Project. The exploration tenure of the was selected to explore the Mooranambool Metamorphic Complex under cover, south of the Stawell Goldfield which has produced 5.2 moz, including the currently operating Stawell Gold Mine which has produced 2.6 moz<sup>[1]</sup>.

The Irvine Gold Project located 16km south of the Stawell Gold Mine and is optimal to leverage existing infrastructure. In 2021 the company announced a Maiden Inferred Mineral Resource of 304 koz at 2.43 g/t gold. The down plunge of mineralisation is known to extend to 800m below surface. **For further details, please refer to the [Irvine Gold Project Fact Sheet](#).**



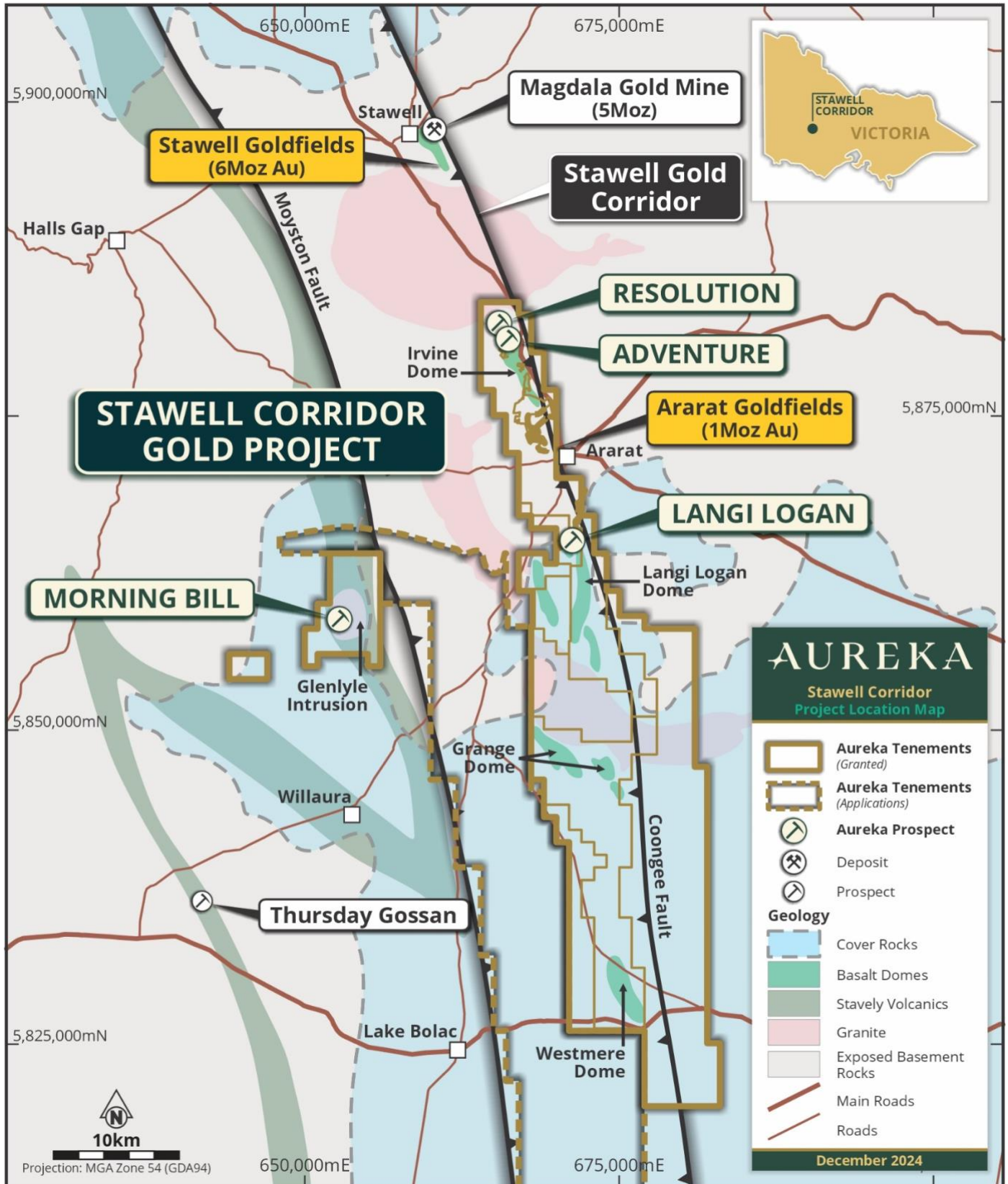
Tenement	Size (km <sup>2</sup> )	Grant	Expiry	Comment
EL5476	120.29	25/02/2015	24/02/2030	-
EL5480	122.97	09/09/2014	08/09/2029	-
EL5497	46.01	09/09/2014	08/09/2029	-
EL006525	0.11	06/03/2018	05/03/2028	-
EL006526	0.66	06/03/2018	05/03/2028	-
EL006527	0.15	02/03/2018	01/03/2028	-
EL006528	4.51	02/03/2018	01/03/2028	-
EL006702	9.80	18/05/2018	17/05/2028	-
EL006745	8.18	18/06/2018	17/06/2028	-
EL007125	243.72	10/06/2020	09/06/2025	-
EL007743	42.00	21/01/2022	20/01/2027	-
EL007950	222.38	-	-	In application
EL007951	479.06	-	-	In application

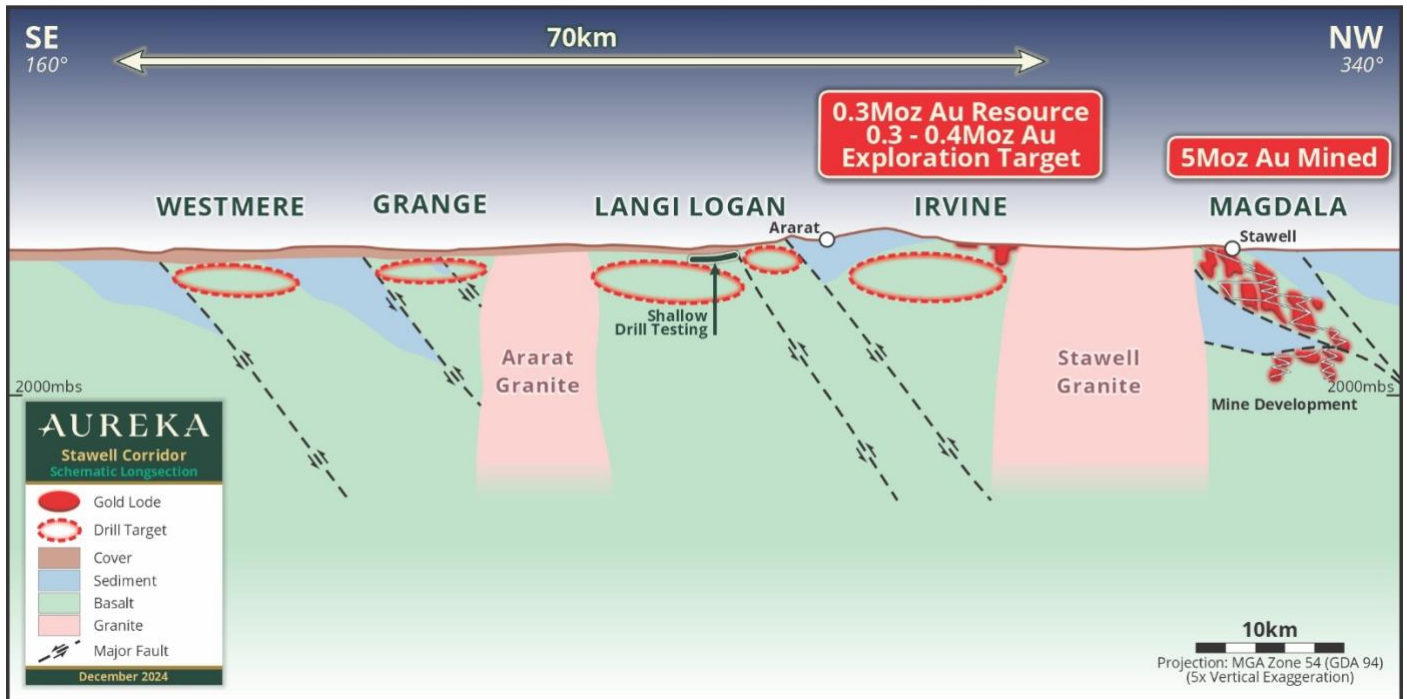
# AUREKA

## STAWELL CORRIDOR GOLD PROJECT

The Morning Bill Gold, Silver & Copper Project is a zoned hydrothermal system discovered beneath volcanic cover. The project is located within the prospective Stavelly-Drysdale Volcanic Belt, 24km north of the

Stavelly Minerals Ltd (ASX:SVY) Thursday's Gossan deposit (27.3Mt at 0.69% Cu, 0.10 g/t Au and 3.4 g/t Ag)<sup>[2]</sup>. For further details, please refer to the [Morning Bill Project Fact Sheet](#)





### Langi Logan and Southern Stawell Corridor

The Langi Logan prospect (LL) comprises a 14.5 kilometre strike length of four, potentially fault-bound, segments of a Cambrian basalt dome structure: the Langi Logan No.1, 2, 3 and 4 basalts. Approximately 70 per cent of the prospect is covered

Hole ID	From (m)	Width (m)	Gold (g/t)	Target
LLA014	66	33	2.9	LL No.2
including	75	11	5.1	
LA031	43	2	19.4	LL No.2
including	43	1	33.6	
LA0067	72	1	7.2	LL No. 3
LA071	90	3	2.4	LL No. 3
Including	92	1	5.4	
LA120	32	1	21.2	LL No. 2
LDD002	131.2	2.4	5.8	LL No. 2
including	131.8	0.5	19.8	
LDD004	480.7	6.8	1.1	LL No.3
including	480.7	0.6	6.9	

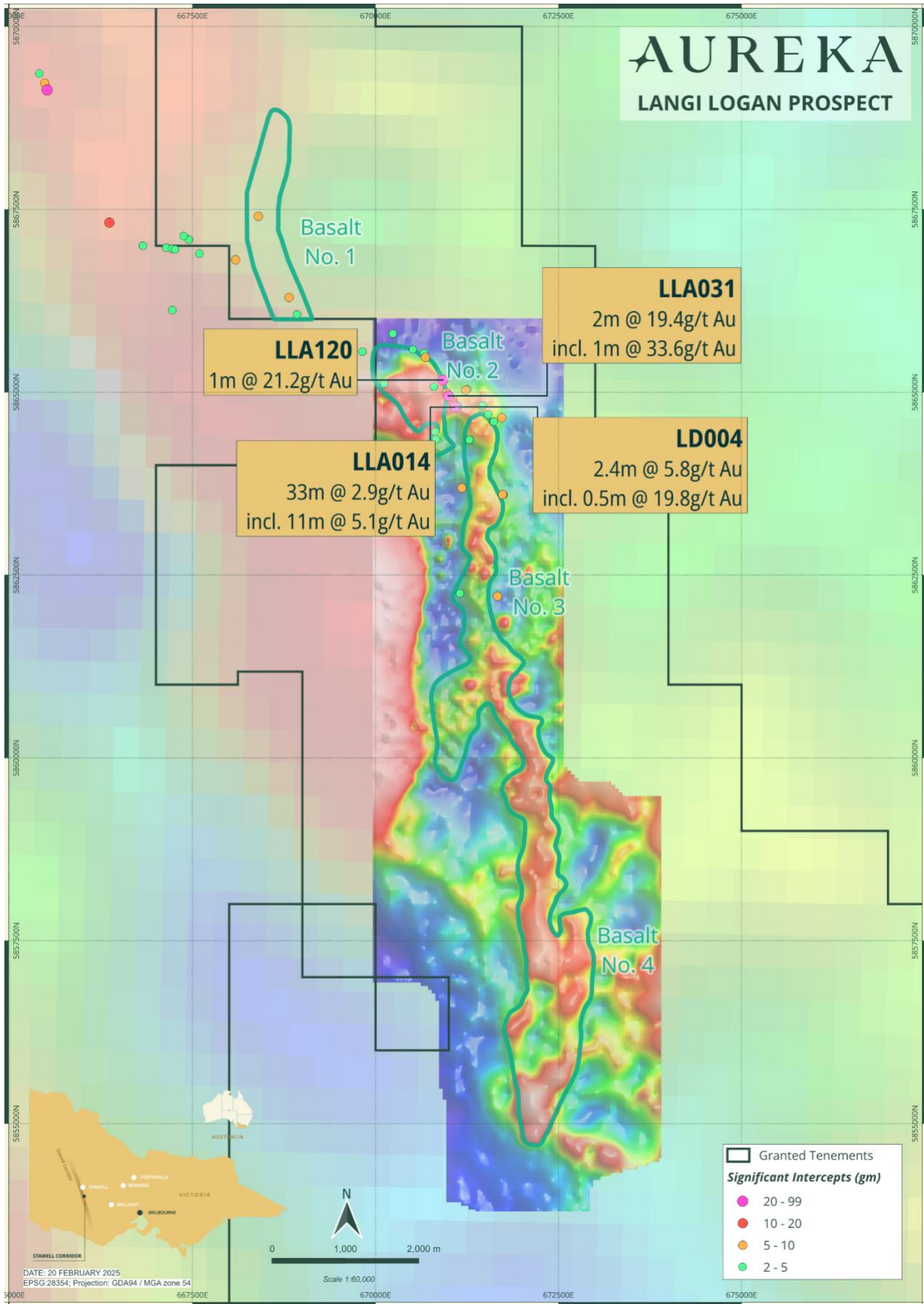
by post-mineralisation Newer Volcanics, ranging from a few metres to approximately 30 metres in thickness. Langi Logan is in an area of significant historical deep lead mining, with 133 koz of gold production recorded [3]. Mineralisation at Langi Logan occurs on the margin of the basalt dome, similar to the Irvine Project and Stawell Gold Mine.

In 2020 Aureka completed a collaborative research study with the CSIRO using supercomputer-based simulations of deformation-fluid flow transport processes involved in the formation of gold deposits, to highlight drill targets on the flanks of the Irvine and Langi Logan basalt domes. Drill testing has included 235 air core and four diamond drill focussing on the no. 2 and no. 3 basalt domes.

Future exploration strategy for Langi Logan includes regional air core drilling testing the western flank of No. 3 and No. 4 basalt domes in areas with minimal previous drilling.

Additional targets in the southern Stawell Corridor include the Grange and Westmere basalt domes which Aureka intends to test with reconnaissance air core drilling.





[1] Stawell Gold Mines, 2024. Stawell Gold Corridor Conference presentation. <https://stawellgoldminescommunityhub.com.au/wp-content/uploads/2024/11/stawell-gold-corridor-conference-stawell-gold-mines-271124.pdf>

[2] Stavelly Minerals Limited, 2022. Stavelly and Ararat Projects – Mineral Resource Update. ASX Release Stavelly Minerals Limited (ASX:SVY) 14 June 2022.

[3] Cayley, R.A. & Taylor R, D.H., 2001. Ararat 1:100 000 map area geological report. Geological Survey of Victoria Report 115.